



2GIG-FF100-345

345S
SECURITY SENSOR

Audio Detector

GENERAL

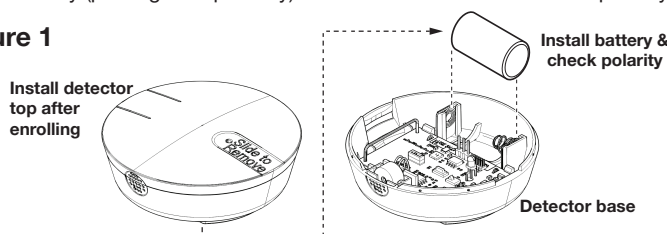
The FireFighter audio detector is designed to listen to any smoke, carbon, or combo detector. Once confirmed as an alarm, the FireFighter detector will transmit a signal to the alarm control panel which, if connected to a central monitoring station, will dispatch the fire department. The detector offers flexible signal transmission options, supporting both encrypted and non-encrypted modes, and is compatible with 2GIG wireless alarm systems.

WARNING: This audio detector is intended only for use with smoke, carbon, and combo detectors, but it does not detect the presence of smoke, carbon, heat, or fire directly.

INSTALL BATTERY

Install battery (packaged separately) into detector base with correct polarity.

Figure 1



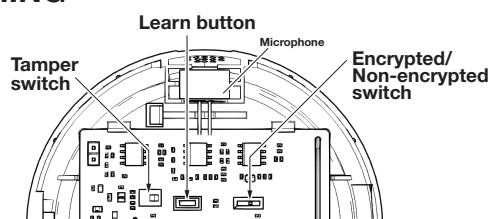
ENCRYPTED/NON-ENCRYPTED MODE

The detector is capable of transmitting signals in encrypted mode or non-encrypted mode. The mode is set through a switch inside the detector (see Figure 2). By default, the factory setting is *non-encrypted* mode. To change to *encrypted* mode:

1. Remove the top plastic housing and remove the battery from the board.
 2. Locate the dip switch (see Figure 2) and note the switch setting: ON indicates *encrypted*, and 1 is *non-encrypted* mode.
 3. Move the switch position to ON for encrypted mode.
 4. Wait at least 10 seconds, then reinstall the battery and close the housing.
- If the detector was previously learned into a panel in a different mode, reset the sensor zone and re-enroll the sensor. If applicable, enter the device equipment code in sensor zone programming.

PROGRAMMING

Figure 2



To enroll the detector, set your panel into program mode. Refer to your specific alarm panel instruction manual for details on these menus. For control panels with an automatic learn feature, press and release the **Learn** button located in the center of the circuit board next to the tamper switch. **Do not use the tamper switch to enroll FireFighter.** Alternatively, the serial number can be manually entered into the panel. The number printed on the device is the serial number for the smoke detection portion; for CO, simply add one (1) to that number. See Figure 2 above for location of **Learn** button.

- To enroll for **fire signal** detection, press and release the **Learn** button. Repeat as required. This uses Loop 1 of the serial number printed on the device. Program the device on the panel as sensor type **24-Hour Fire (09)**.
- To enroll for **Carbon Monoxide** signal detection, press the **Learn** button for 2 seconds. Repeat as required. This uses Loop 1 of the serial number plus 1. Program the sensor type on the panel as **24-Hour Carbon Monoxide (14)**.

CLOSING DETECTOR (see Figure 3)

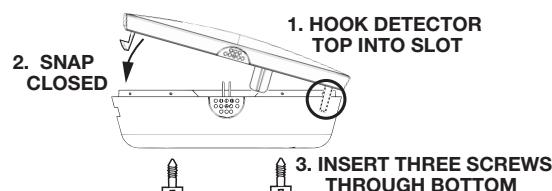
After battery is installed and detector is enrolled, close device as shown in Figure 3 and fasten together with three (3) screws (packaged separately).

MOUNTING (see Figures 4 & 5)

Included with this device is a mounting bracket, hardware, and double-sided

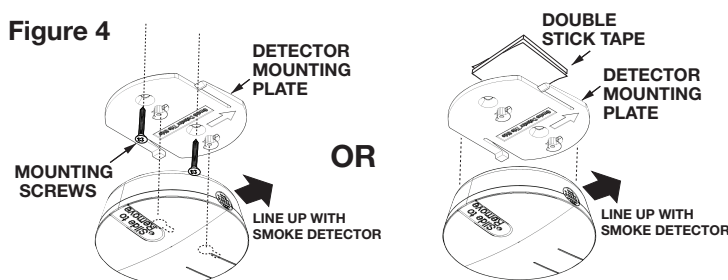
tape. For proper operation, ensure the side of the device with the small holes is directly facing the speaker holes (see Figure 5) on the smoke detector. Secure the mounting bracket to the wall or ceiling using the two mounting screws or double-sided tape. Secure the detector to the mounting bracket by sliding tabs into base of detector. FireFighter must be mounted within 6 inches of the detector for optimal operation, as shown in Figure 5.

Figure 3



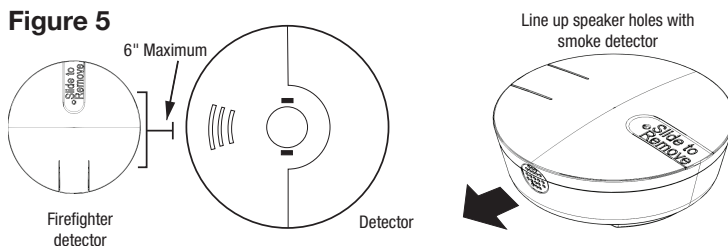
WARNING: Non-interconnected smoke detectors require an audio detector by each smoke detector sounder.

Figure 4



This detector should be installed in accordance with Chapter 2 of the National Fire Alarm Code, ANSI/NFPA 72, (National Fire Protection Association, Battery March Park, Quincy, MA 02269). Printed information describing proper installation, operation, testing, maintenance, evacuation planning, and repair service is to be provided with this equipment. **Warning - Owner's instruction notice:** Not to be removed by anyone except occupant.

Figure 5



TESTING

During the first hour after powering up, the FireFighter is in test mode. This allows you to use the **Test** button on the Smoke, CO, or Combo unit to test the system. After the first hour, the FireFighter requires at least two valid patterns from the detector to validate the alarm, which may not be possible via the detector **Test** button. To test the audio detection, press and hold the detector's **Test** button for at least 30 seconds to ensure that FireFighter has had sufficient time to identify the alarm pattern and lock into alarm. For combo units, the detector will typically sound the smoke temporal then the CO temporal pattern. In test mode, the FireFighter will detect both and send two transmissions to the panel. Ensure the FireFighter device cover is on and that you wear hearing protection.

- **NOTE:** It is possible that FireFighter can hear other detectors in close proximity so it is important to choose and to install the FireFighter close to a detector that is relatively isolated from other detectors of the same type. If this is not possible, FireFighter will still function, however it will take longer to register and transmit an alarm to the panel. Detectors to avoid are typically ones mounted in hallways outside of bedrooms that will also have additional detectors nearby.
- **NOTE:** This system must be checked by a qualified technician at least once every three (3) years. Please test the unit once per week to ensure proper functionality.

Legacy Smoke Detectors

All Smoke detectors should be replaced after 10 years. If you encounter a smoke detector that does not support Temporal 3 pattern, that smoke detector should be replaced as per the manufacturer recommendation. If replacement is not an option, the FireFighter can be programmed to detect non-temporal detectors.

To support a non-temporal pattern, the FireFighter must not be located near any other audible device, like a security keypad or sounder. Those can be misconstrued as a valid smoke alarm. To set the device to listen for a non-temporal pattern, press and hold the tamper switch while inserting the battery. Release the tamper switch and note the LED. Repeating this action will switch the FireFighter operating mode from one to the other.

You can verify the mode FireFighter is in by simply removing the battery and replacing it. The LED will flash once or twice depending on the mode it is in.

ONE flash: Only Temporal 3 and 4 signal will trigger an alarm (Default).

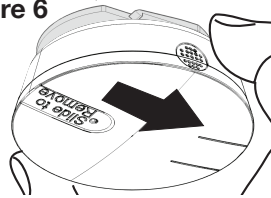
TWO flashes: Generic listening mode. Will trigger after 30 seconds of continuous sounding.

REPLACING THE BATTERY

When the battery is low a signal will be sent to the control panel. To replace the battery:

1. Slide detector in direction of arrow to remove from mounting plate.
2. Remove 2 screws from detector base. Remove the top cover to reveal the battery. This will send a tamper signal to the control panel.
3. Replace with a Panasonic CR123A battery ensuring the + side of the battery faces as indicated on the device (see Figure 1).
4. Re-attach the cover, you should hear a click when the cover engages properly.
5. Re-install the two screws holding the detector together.

Figure 6



WARNING: While the audio detector monitors its own battery, it does not monitor the battery in the smoke detectors. Batteries should be changed as per the original smoke detector manufacturer's instructions. Always test the audio detector and smoke alarms after battery installation to confirm proper operation.

Specifications

| | |
|-------------------------------|--|
| Transmitter Frequency | 345.00 MHz (crystal controlled) |
| Battery | One 3VDC lithium CR123A (1550 mAh) |
| Code Outputs | Alarm; Supervisory; Low Battery |
| Battery Life | 5 years |
| Detection distance | 6 inches max |
| Operating Temperature | 32° to 120° F (0° to 49° C) |
| Operating Humidity | 5-95% RH non-condensing |
| Compatibility | 2GIG receivers |
| Supervisory Interval | 64 min (approx.) |
| Maximum current draw | 23mA during transmission |
| Housing Material | ABS Plastic |
| Color | White |
| Regulatory Listings | FCC, IC |
| Equipment Code | 2069 (encrypted); 1069 (non-encrypted) |
| Panel Programming Sensor Loop | Loop 1 |

Regulatory Information

We, Nice North America LLC of 5919 Sea Otter Place, Ste. 100, Carlsbad, CA 92010, declare under our sole responsibility that the device, 2GIG-FF100-345, complies with Part 15 of the FCC rules.

FCC Notice & IC Notice

This device complies with Part 15 of the FCC's Rules. Operation is subject to the following two conditions:

- 1) This device may not cause harmful interference, and
- 2) This device must accept any interference received, including interference that may cause undesired operation.

This Class B digital apparatus complies with Canadian ICES-003.

This equipment has been tested and found to comply with the limits for a Class B digital device, pursuant to Part 15 of the FCC Rules. These limits are designed to provide reasonable protection against harmful interference in a residential installation.

This equipment generates, uses and can radiate radio frequency energy and, if not installed and used in accordance with the instructions, may cause harmful interference to radio communications. However, there is no guarantee that interference will not occur in a particular installation. If this equipment does cause harmful interference to radio or television reception, which can be determined by turning the equipment off and on, the user is encouraged to try to correct the interference by one or more of the following measures:

- Reorient or relocate the receiving antenna.
- Increase the separation between the equipment and receiver.
- Connect the equipment into an outlet on a circuit different from that to which the receiver is connected.
- Consult the dealer or an experienced radio/TV technician for help.

* For more warranty and compliance information, visit our website (www.2gig.com)

FCC

Federal Communication Commission (FCC) Radiation Exposure Statement:

When using the product, maintain a distance of 20cm from the body to ensure compliance with RF exposure requirements.

IC

Radiation Exposure Statement:

This equipment complies with IC radiation exposure limits set forth for an uncontrolled environment. This equipment should be installed and operated with minimum distance 20cm between the radiator & your body.

WARNING: Changes or modifications not expressly approved by the manufacturer could void the user's authority to operate the equipment.

Limited Warranty

This Nice North America product is warranted against defects in material and workmanship for two (2) years. This warranty extends only to wholesale customers who buy direct from Nice North America LLC or through Nice North America LLC's normal distribution channels. Nice North America LLC does not warrant this product to consumers. Consumers should inquire from their selling dealer as to the nature of the dealer's warranty, if any. There are no obligations or liabilities on the part of Nice North America LLC for consequential damages arising out of or in connection with use or performance of this product or other indirect damages with respect to loss of property, revenue, or profit, or cost of removal, installation, or reinstallation. All implied warranties for functionality, are valid only until the warranty expires. This Nice North America LLC Warranty is in lieu of all other warranties express or implied.

All products returned for warranty service require a Return Authorization Number (RA#). Contact Returns at 1-855-546-3351 for an RA# and other important details.



Disclaimer

The Firefighter detector does not detect the presence of smoke, heat, or fire directly. It relies solely on the presence of an audio alarm signal generated by an existing smoke or fire detector in proximity to the Firefighter detector to make such a determination. The Firefighter™ detector must be used with smoke detectors certified according to UL Standards, and in strict accordance with the installation and operation instructions provided with such detectors. It is the owner's responsibility to ensure that smoke or fire detectors used in conjunction with the Firefighter detector are maintained and tested on a regular basis in accordance with the manufacturer's instructions. Nice North America expressly disclaims any responsibility for the failure of the Firefighter detector to detect the presence of smoke or fire due to the failure of any smoke or fire detector used in conjunction with the Firefighter detector to operate properly due to any condition, including improper installation, operation, maintenance or testing of such smoke or fire detector.



Customer Service

760-438-7000
Monday – Friday, 5 a.m. – 4:30 p.m. PST
Saturday, 7 a.m. – 3:30 p.m. PST
www.2gig.com

Nice North America LLC

5919 Sea Otter Place, Suite 100
Carlsbad, CA 92010



Niceforyou.com

©2025 Nice North America LLC. 2GIG is a registered trademark of Nice North America LLC. All rights reserved. 10034953 Rev-A